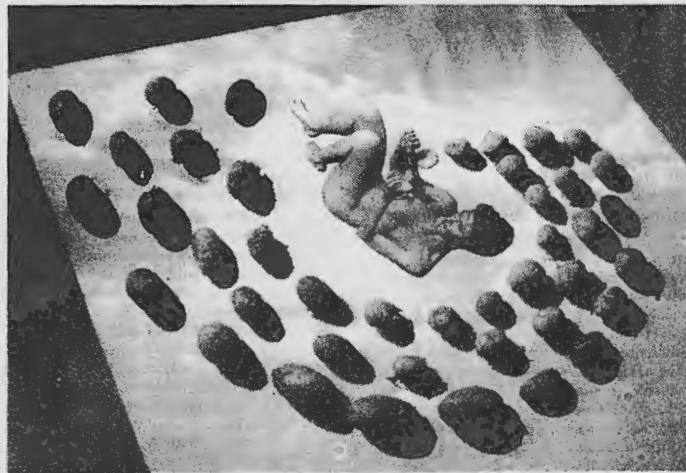


OPENMIND

EXHIBITIONS



'Peeling potatoes in paradise . . . mustn't waste time'
by Claire Collinson

What makes women ill? Why do they continue to suffer in silence? 'Silent Health' is a multi-media exhibition of photography, posters, events and a publication, opening at Camerawork, 121 Roman Road, Bethnal Green, London E2 0QN (081-980 6256) from 24 October and then touring the country. It aims to demystify dominant images of women which contribute to women's uneasy relationship with their bodies and their health.

Topics include safe sex and cervical cancer; the taboos surrounding female ageing; historical myths of women as healers, witches and hysterics; tranquillizer dependency; and alternative therapies. Photographer Claire Collinson's images emerge from a personal experience of myalgic encephalomyelitis (ME), which afflicts eight times more women than men and brings symptoms of extreme fatigue, depression, confusion and erratic mood swings. Her photos suggest that the superwoman image — trying to be everything to everyone — is a major factor in the genesis of ME. Her photos 'are dedicated to any woman who thought she was invincible.'